

Attachment B2

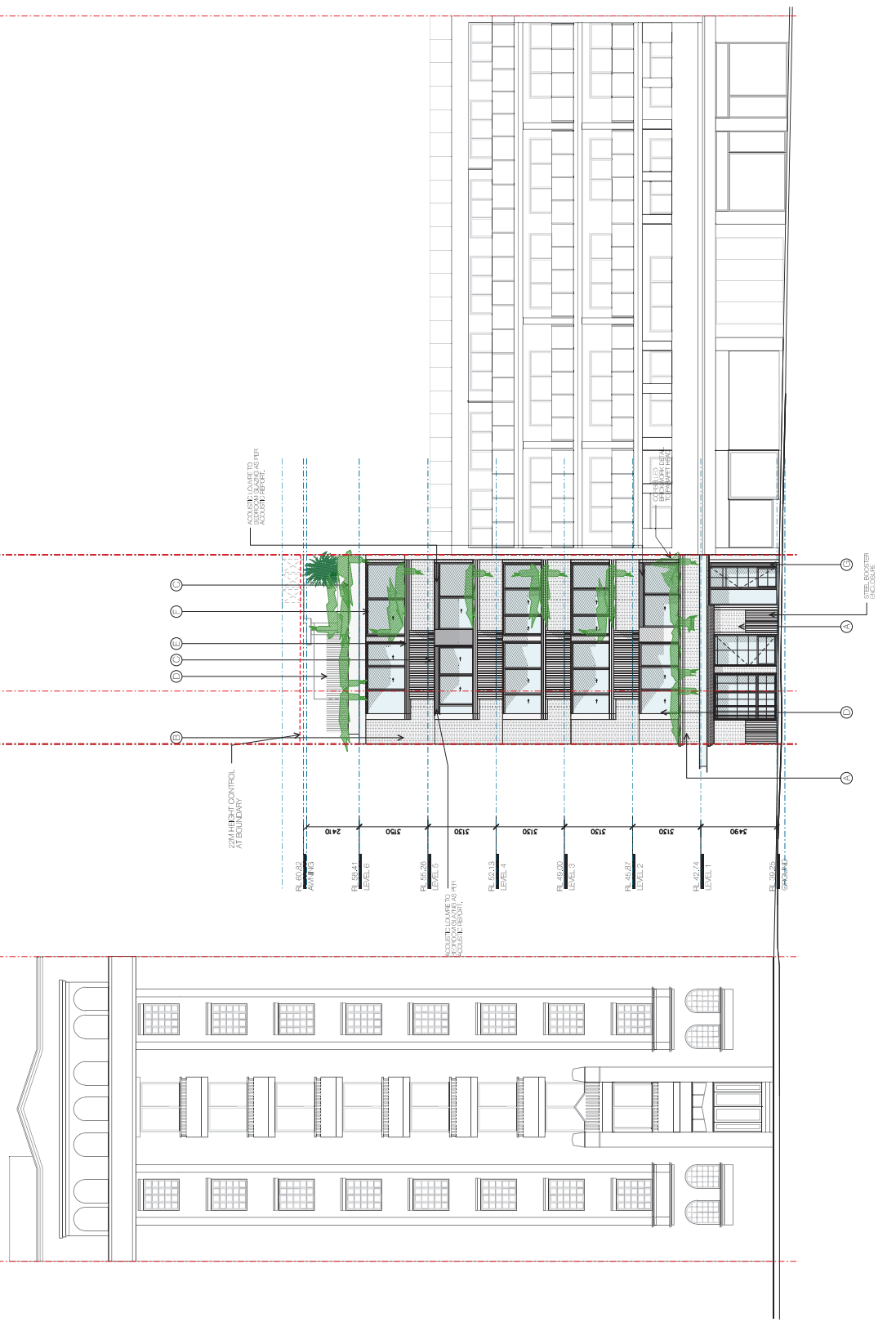
Selected Drawings

91 - 93 MACLEAY STREET

SUBJECT SITE

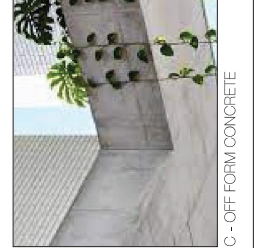
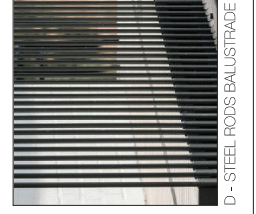
HUGHES STREET

97-99 MACLEAY STREET



000237860 24 Oct 2023
 Approved Development
 Accession No. DM671431
 5.4
 Planning
 HOUSE
 City of Fairfield
 122 BIRNBECK STREET
 GREENFIELD NSW 2150
 DA 1301

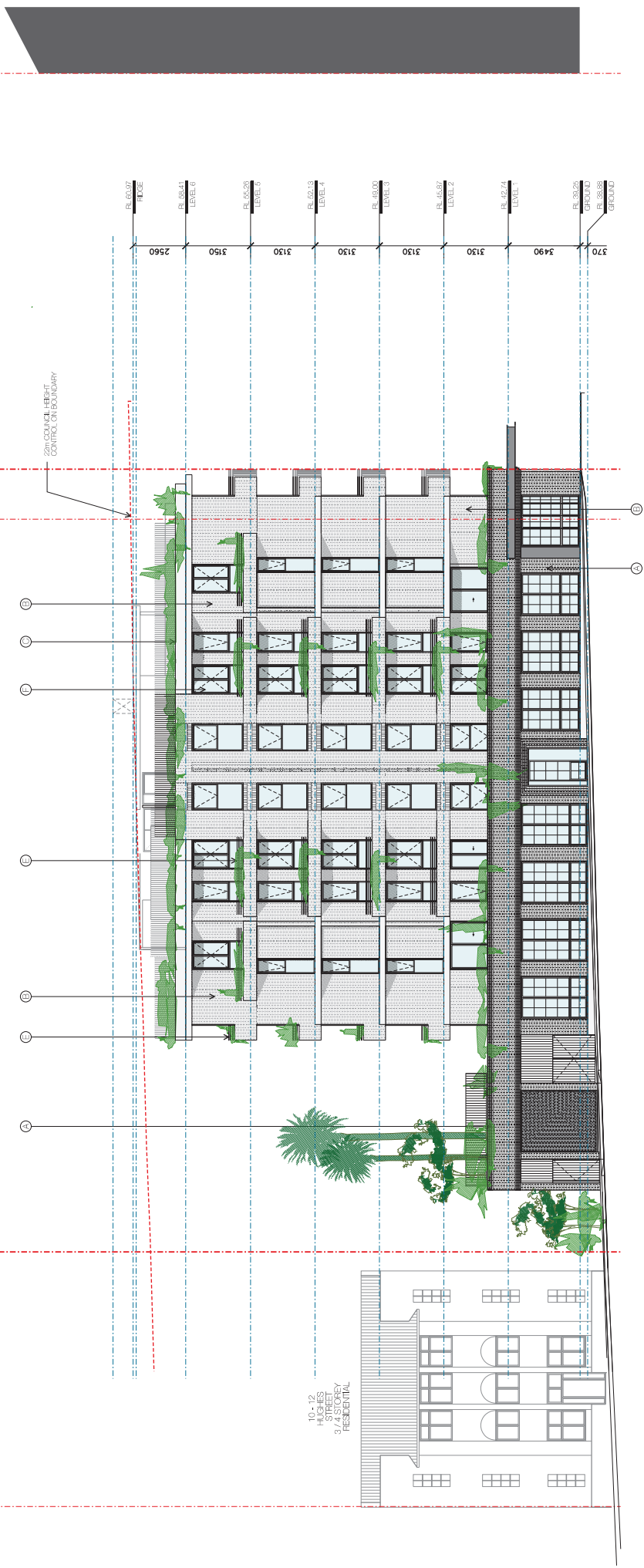
DAVID MITCHELL
 architects
 architects
 12/100 ROYAL AVENUE
 SYDNEY NSW 2007
 T: (61) 2 9550 4600
 F: (61) 2 9550 4611
 WWW.DMARCHITECTS.COM.AU
 COPYRIGHT © 2023 DAVID MITCHELL ARCHITECTS



A - DANISH BRICK 'PETERSONS' BRICK B - DANISH BRICK 'PETERSONS' BRICK D71
 D58(1/2%), D98(0/0%)
 C - OFF FORM CONCRETE
 D - STEEL RODS BALUSTRADE E - STEEL BALUSTRADE F - ALUMINIUM GLAZING G - MARBLE CLADDING

01 ELEVATION EAST
 1/100

10-12 HUGHES STREET SUBJECT SITE MACLEAY STREET 49 MACLEAY STREET

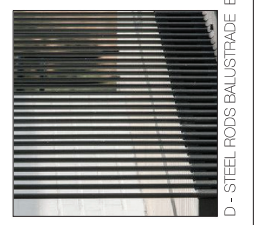
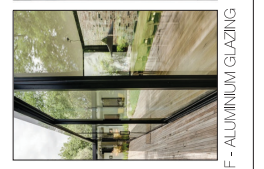


01 ELEVATION SOUTH
1/10

000237860 24 Oct 2023
 Address: David Mitchell Architects
 Accreditation No.: DA19731431
 5.4
 Approved
 HOUSE
 DA 1302
 ELEVATION SOUTH
 DA 1302
 1:100
 0 2 4 6 8 10 12 14 16 18 20
 METERS & FEET

DAVID MITCHELL architects
 11/11-13/13 HUGHES STREET
 SYDNEY NSW 2008
 TEL: 02 9250 1000
 WWW.DMARCHITECTS.COM.AU

DAVID MITCHELL architects
 11/11-13/13 HUGHES STREET
 SYDNEY NSW 2008
 TEL: 02 9250 1000
 WWW.DMARCHITECTS.COM.AU

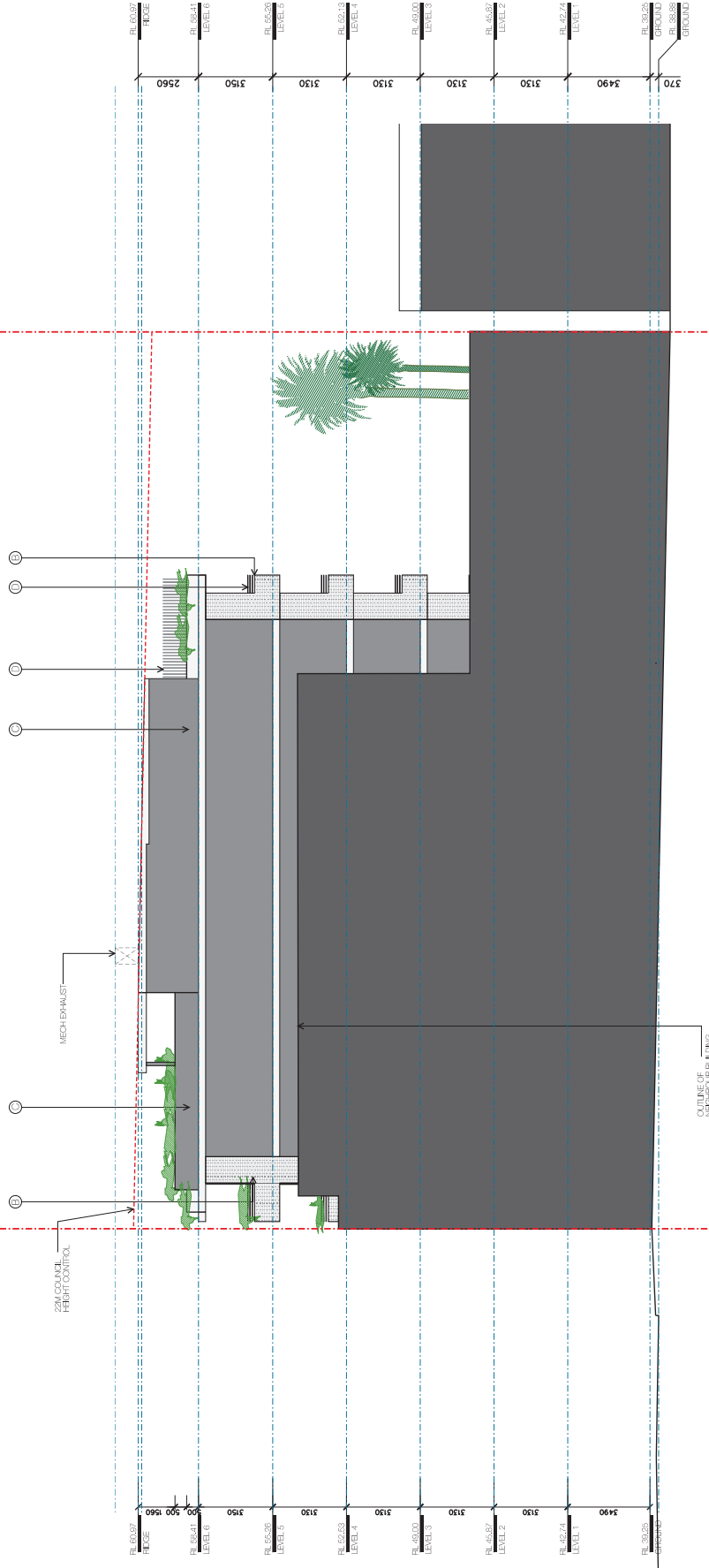


A - DANISH BRICK 'PETERSONS' BRICK D58(10%) D98(90%)
 B - DANISH BRICK 'PETERSONS' BRICK D58(10%) D98(90%)
 C - OFF FORM CONCRETE
 D - STEEL RODS BALUSTRADE
 E - STEEL BALUSTRADE
 F - ALUMINIUM GLAZING
 G - MARBLE CLADDING

10-12 HUGHES STREET

SUBJECT SITE

MACLEAY STREET



10 - 12 HUGHES STREET
3 / 4 STOREY
RESIDENTIAL

01 ELEVATION NORTH



A - DANISH BRICK 'PETERSONS' BRICK D581(09), D583(009)

B - DANISH BRICK 'PETERSONS' BRICK D71

C - OFF FORM CONCRETE

D - STEEL RODS BALUSTRADE

E - STEEL BALUSTRADE

F - ALUMINIUM GLAZING

G - MARBLE CLADDING

DAVID MITCHELL architects

3/4 HUGHES ST.
PORTSMOUTH

DAVID MITCHELL architects
11/12 HUGHES STREET
PORTSMOUTH NSW 2257
PH: 02 9439 2222
WWW.DMARCHITECTS.COM

DAVID MITCHELL architects
ELEVATION NORTH
DA 1303

DATE: 27/09/23
DRAWN: S. EDWARDS
CHECKED: J. MITCHELL

PROJECT NO. 2201

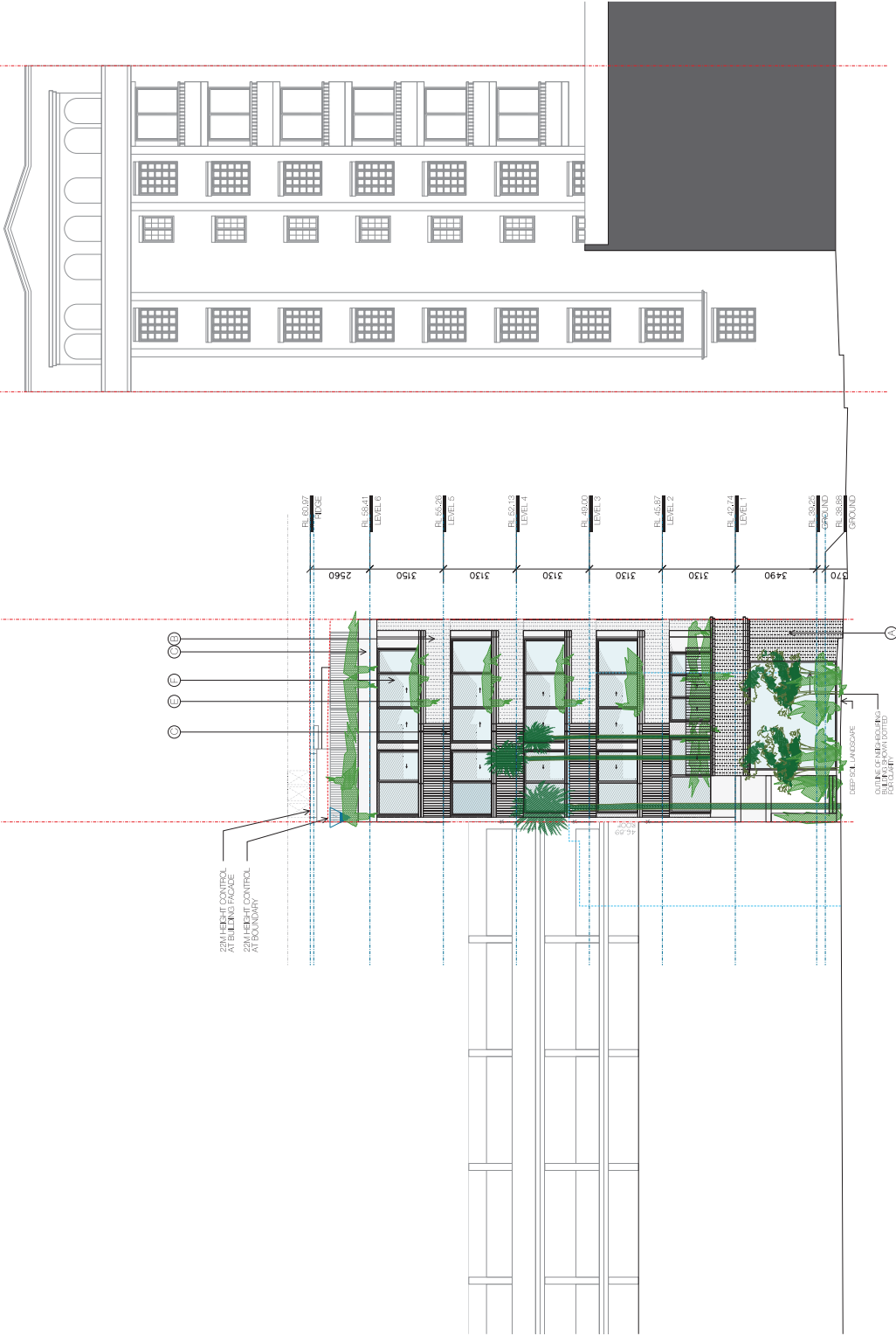
000237860 24 Oct 2023
5.4
Accreditation No. DA01701431
REGISTERED ARCHITECT
100 Macleay Street
Portsmouth NSW 2257
www.dmitcheil.com.au

MACLEAY STREET

SUBJECT SITE

HUGHES STREET

97-99 MACLEAY STREET

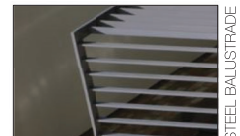
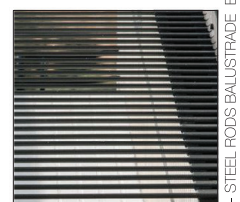


22M HEIGHT CONTROL
AT BUILDING FACADE

22M HEIGHT CONTROL
AT BOUNDARY

DEEP SILL LANDSCAPE
(SCREENED BALCONY BALUSTRADE)

01. ELEVATION WEST



A - DANISH BRICK 'PETERSONS' BRICK D58(128), D99(90/98)

B - DANISH BRICK 'PETERSONS' BRICK D71

C - OFF FORM CONCRETE

D - STEEL RODS BALUSTRADE

E - STEEL BALUSTRADE

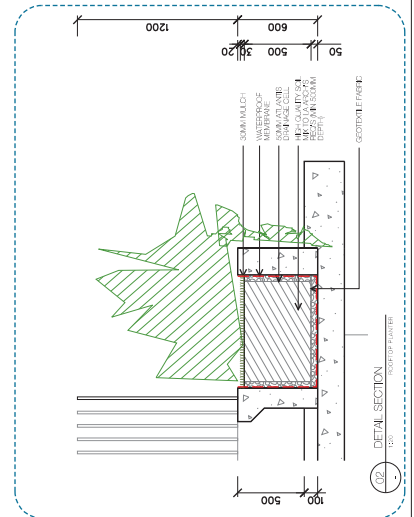
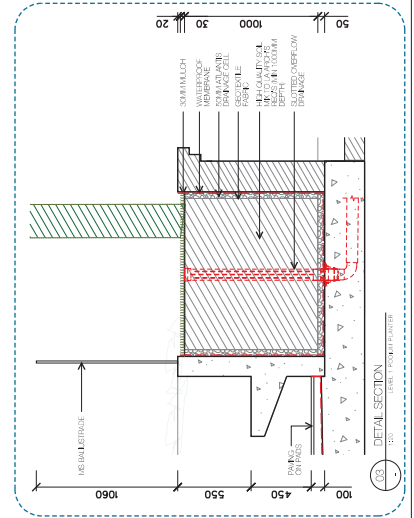
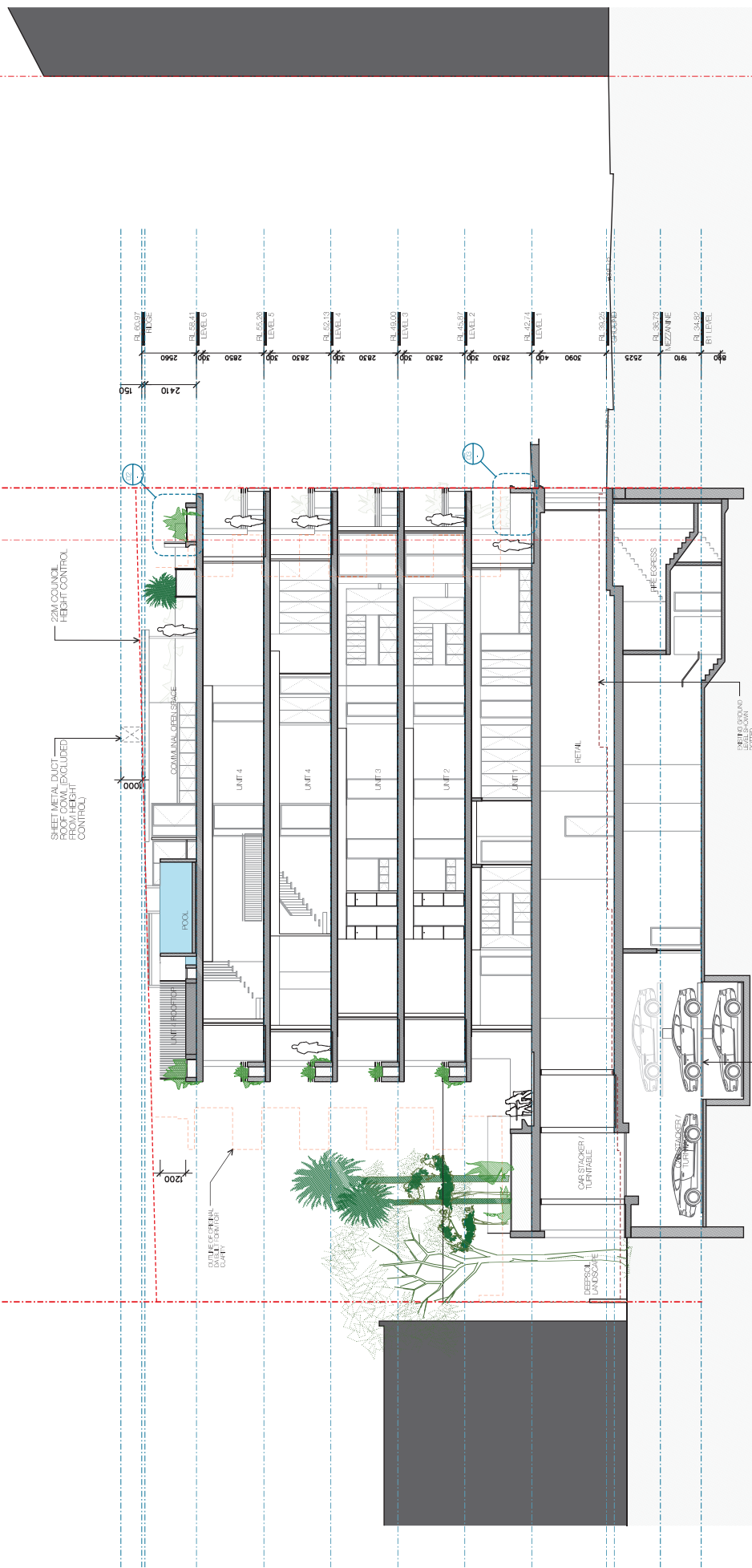
F - ALUMINIUM GLAZING

G - MARBLE CLADDING

DAVID MITCHELL
architects
100/102 MACLEAY STREET
SYDNEY NSW 2000
PHONE: 02 9550 4300
WWW.DMARCHITECTS.COM.AU

PROJECT NO: 22/00018
JOB NO: 22/00018-001
DRAWING NO: 01
DATE: 24 OCT 2023
SCALE: 1:100
DRAWN BY: [Name]
CHECKED BY: [Name]

5.4
Australian
Architects
REGISTERED
HOUSE
000237860 24 Oct 2023
Address: David Mitchell
Architects No. 100/102 Macleay Street
Sydney NSW 2000
DA 1304
ELEVATION WEST
1:100
DATE: 24 OCT 2023



01 SECTION A 1:10

000237860 24 Oct 2023
 Approved
 5.4
 Address: David Mitchell Architects Pty Ltd
 Accreditation No.: DA1701
 100 Riverside Drive
 Sydney NSW 2011
 www.davidmitchell.com.au

DAVID MITCHELL architects
 architects
 100 Riverside Drive
 Sydney NSW 2011
 Tel: +61 (0)2 9211 8888
 Fax: +61 (0)2 9211 8889
 Email: david@dm.com.au
 www.davidmitchell.com.au

DAVID MITCHELL ARCHITECTS
 ARCHITECTS
 100 RIVERSIDE DRIVE
 SYDNEY NSW 2011
 TEL: +61 (0)2 9211 8888
 FAX: +61 (0)2 9211 8889
 EMAIL: david@dm.com.au
 WWW.DAVIDMITCHELL.COM.AU

DAVID MITCHELL ARCHITECTS
 ARCHITECTS
 100 RIVERSIDE DRIVE
 SYDNEY NSW 2011
 TEL: +61 (0)2 9211 8888
 FAX: +61 (0)2 9211 8889
 EMAIL: david@dm.com.au
 WWW.DAVIDMITCHELL.COM.AU

DAVID MITCHELL ARCHITECTS
 ARCHITECTS
 100 RIVERSIDE DRIVE
 SYDNEY NSW 2011
 TEL: +61 (0)2 9211 8888
 FAX: +61 (0)2 9211 8889
 EMAIL: david@dm.com.au
 WWW.DAVIDMITCHELL.COM.AU

